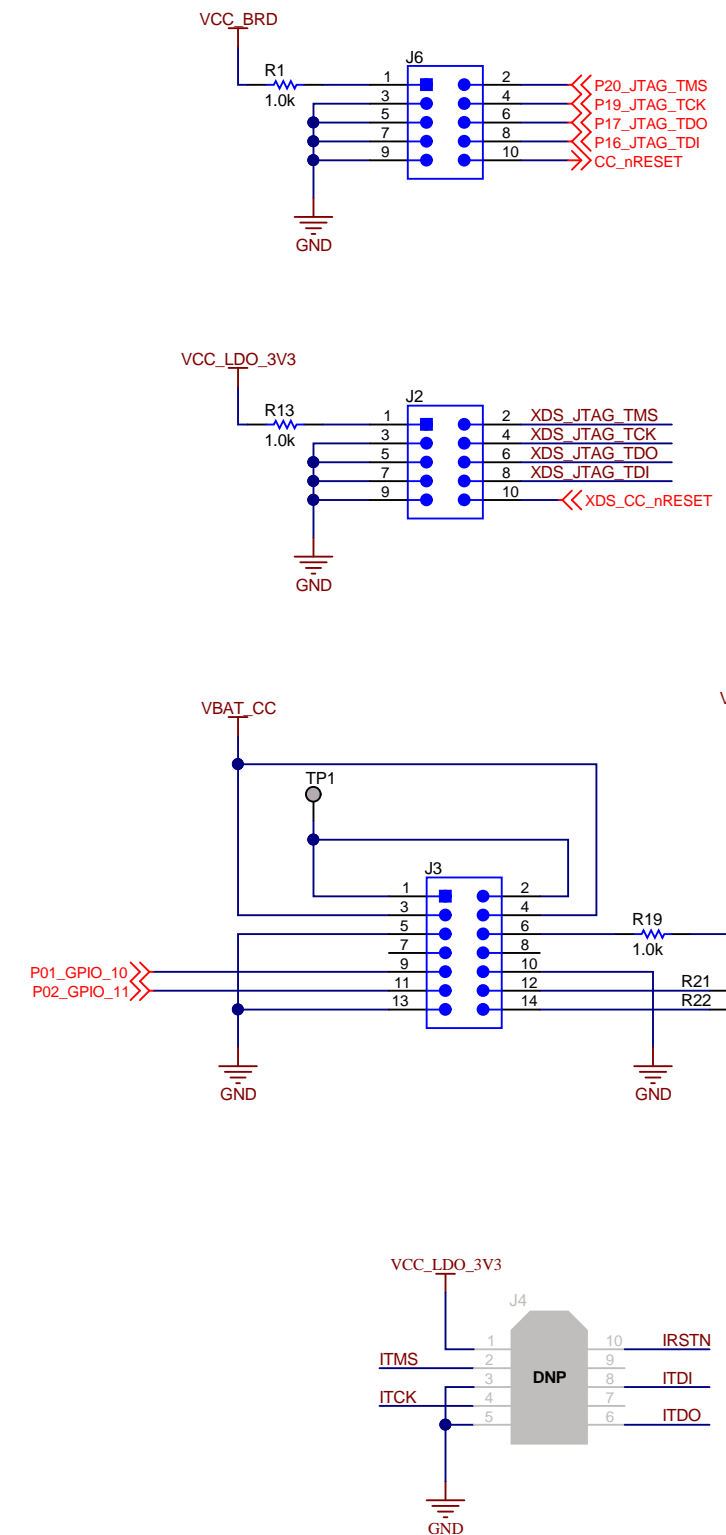
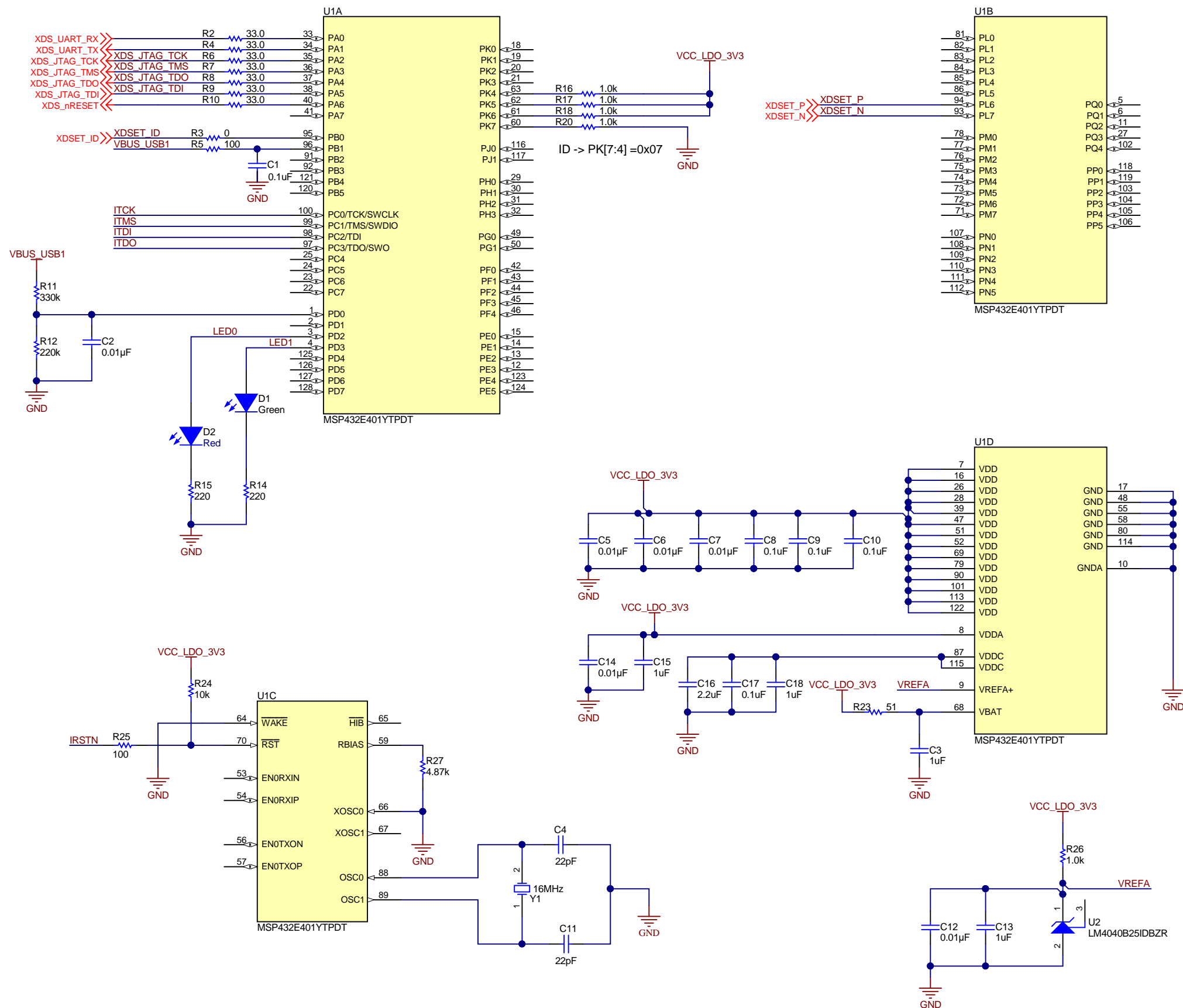

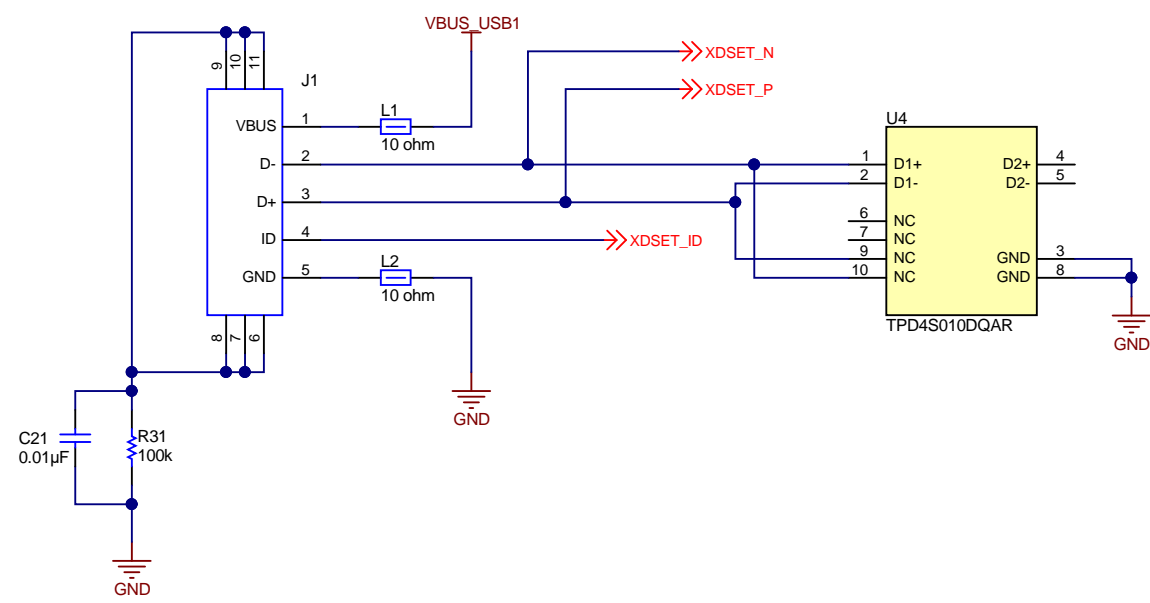


MSP432E4 HOST MCU FOR EMULATION

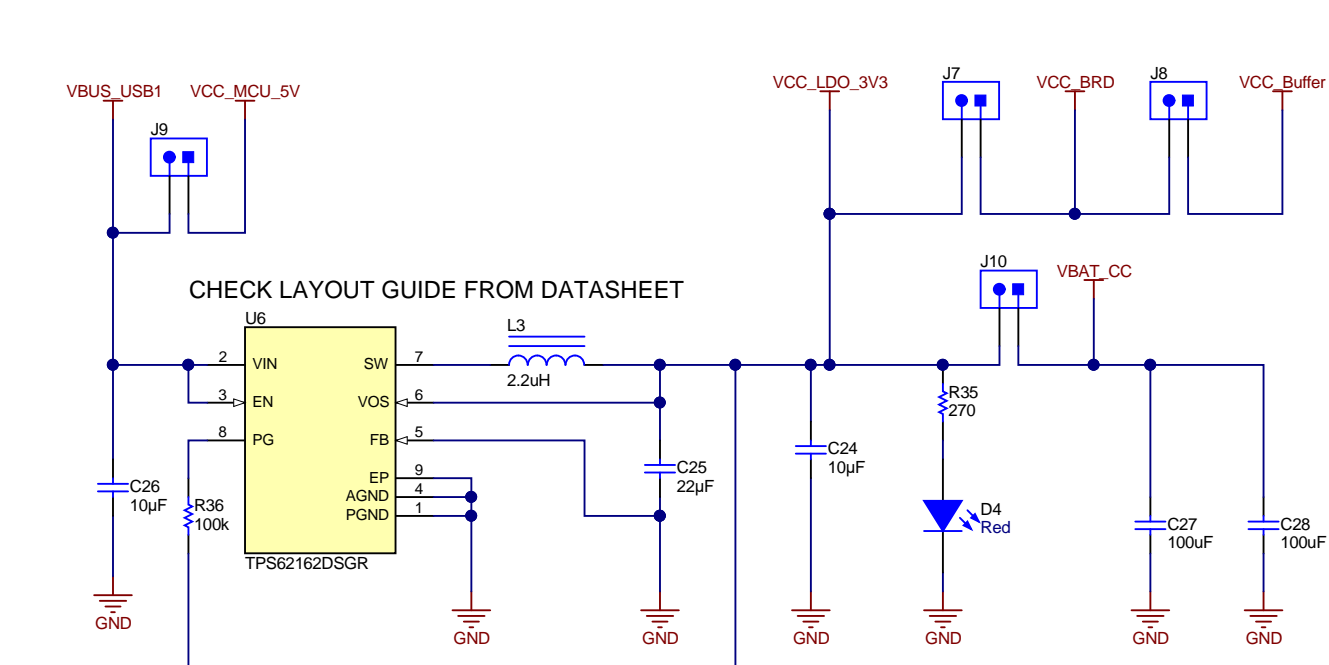


Orderable: LAUNCHCC3235MOD	Designed for: Public Release	Mod. Date: 5/6/2019	 TEXAS INSTRUMENTS http://www.ti.com © Texas Instruments 2019
TID #: N/A	Project Title: LAUNCHCC3235MOD		
Number: MCU070	Rev: A	Sheet Title: XDS110_Host	
SVN Rev: Not in version control	Assembly Variant: 001	Sheet: 1 of 6	
Drawn By: Seong Kim	File: MCU070A_XDS110_Host.SchDoc	Size: B	
Engineer: Seong Kim	Contact: http://www.ti.com/support		

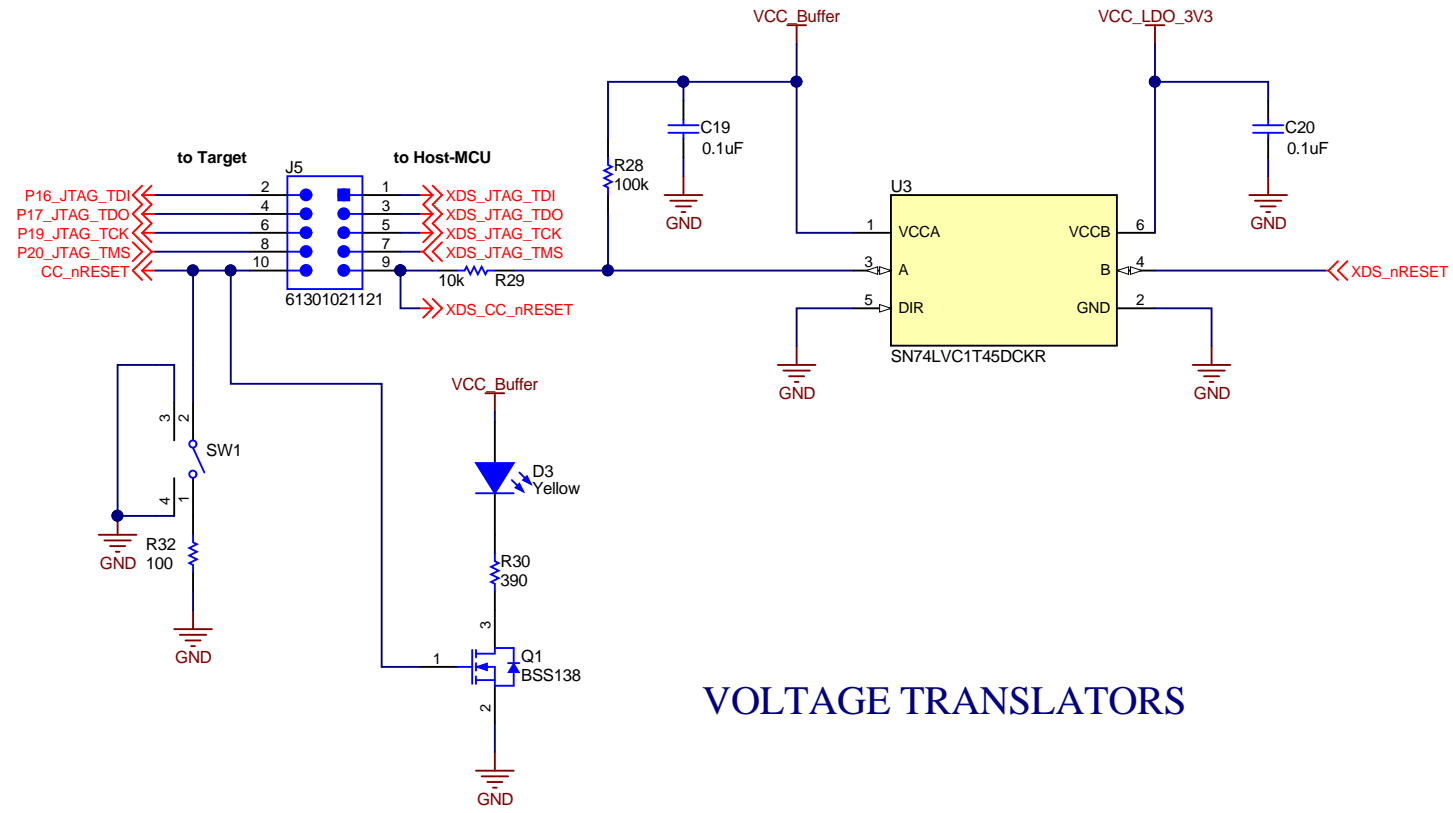
USB-INTERFACE



POWER MANAGEMENT



VOLTAGE TRANSLATORS



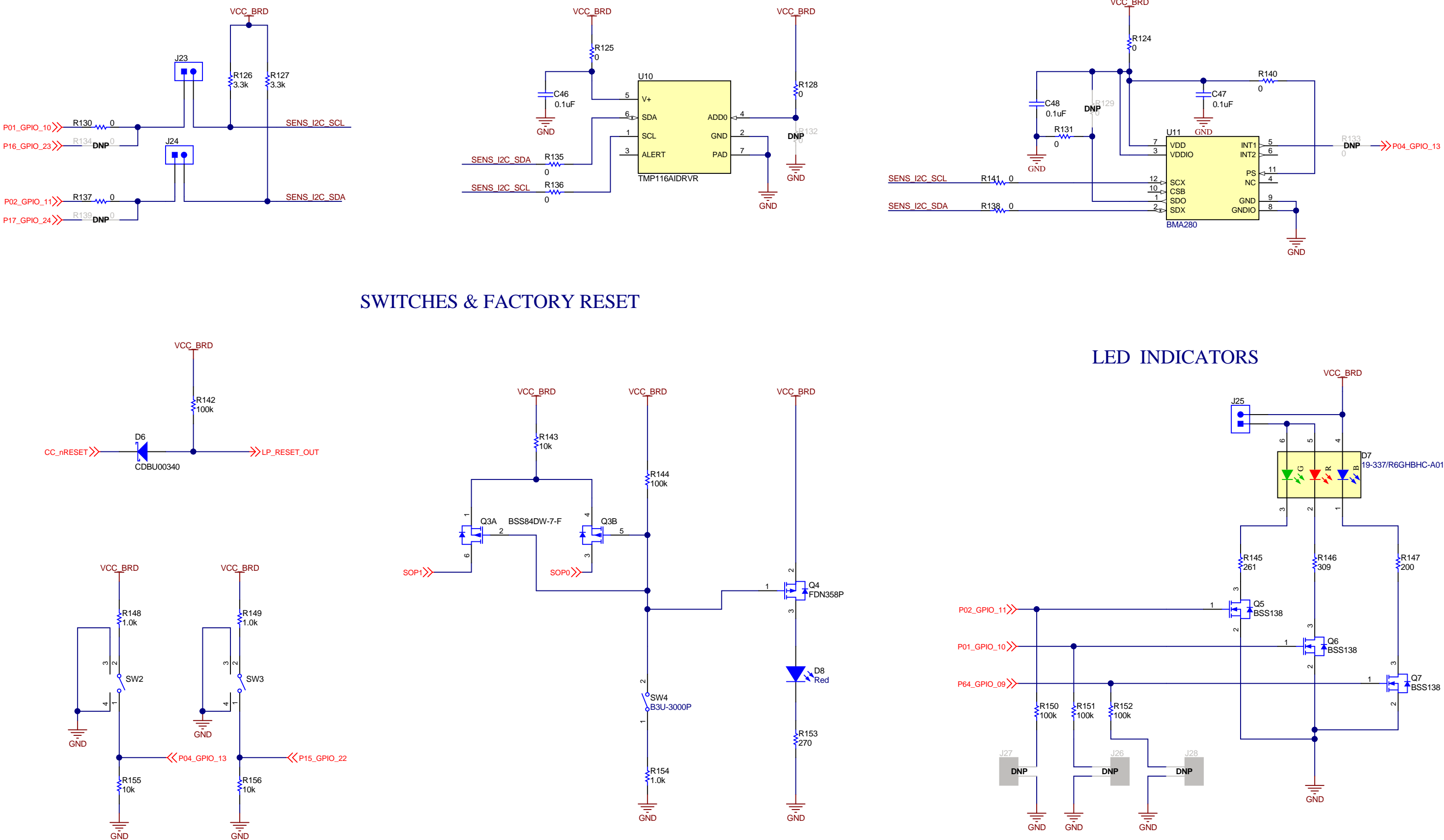
I2C BUS SELECTION

TEMP SENSOR

ACCELEROMETER

SWITCHES & FACTORY RESET

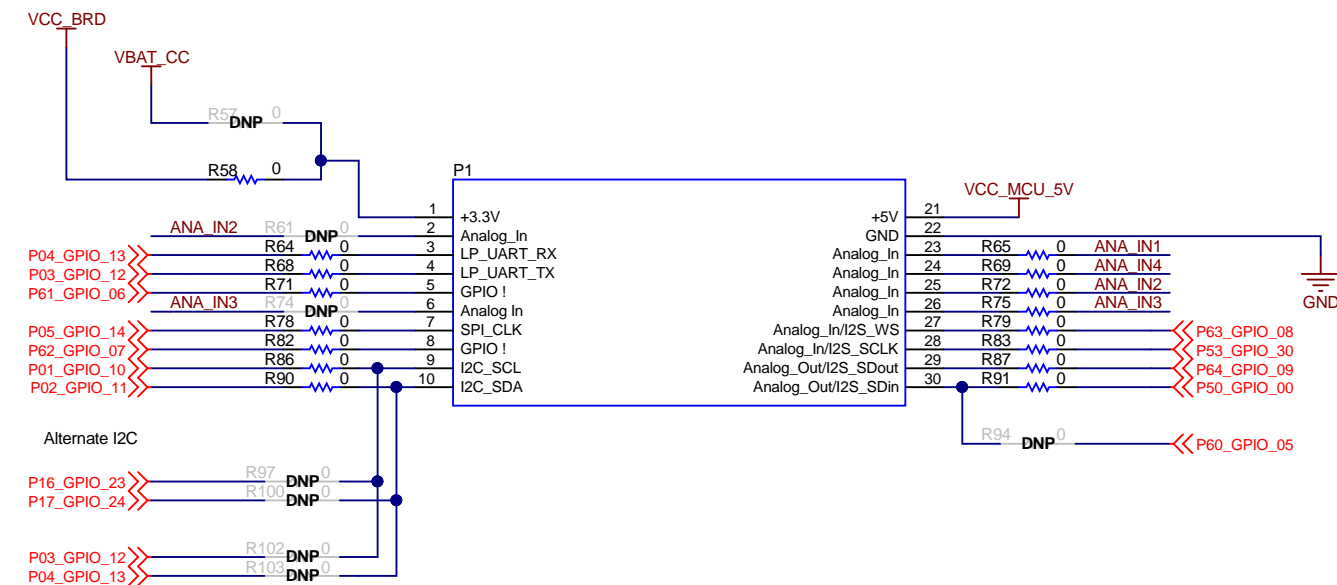
LED INDICATORS



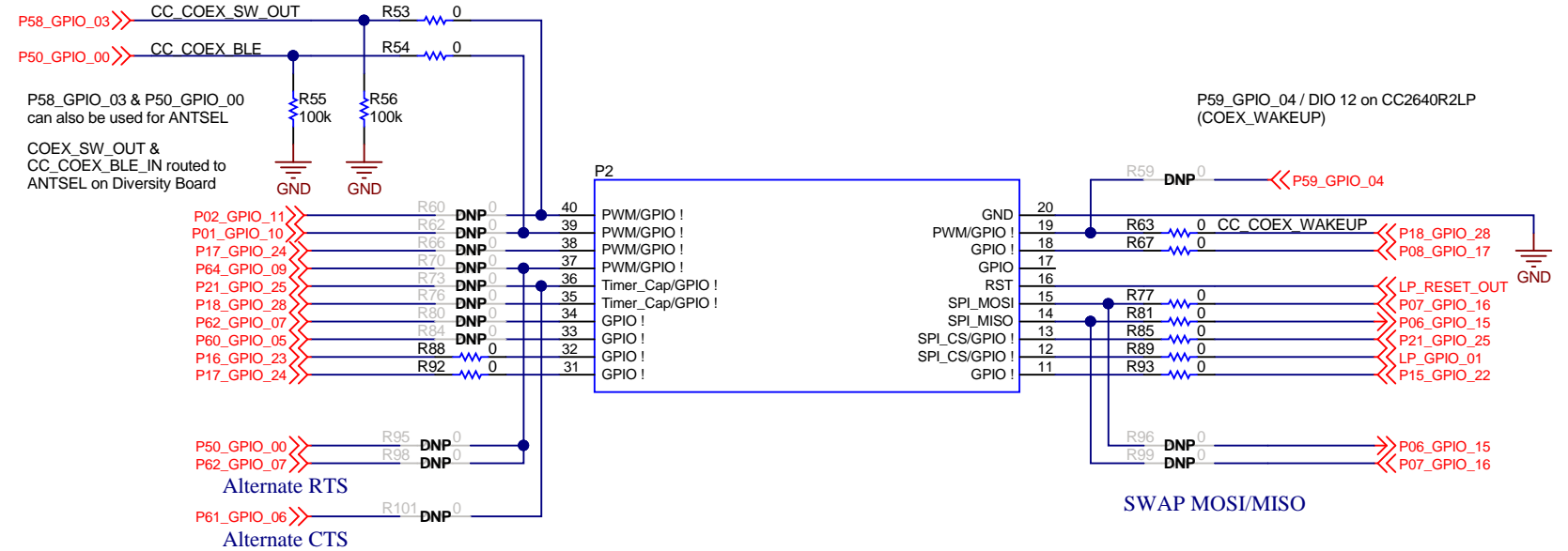
Texas Instruments and/or its licensors do not warrant the accuracy or completeness of this specification or any information contained therein. Texas Instruments and/or its licensors do not warrant that this design will meet the specifications, will be suitable for your application or fit for any particular purpose, or will operate in an implementation. Texas Instruments and/or its licensors do not warrant that the design is production worthy. You should completely validate and test your design implementation to confirm the system functionality for your application.

Orderable: LAUNCHCC3235MOD	Designed for: Public Release	Mod. Date: 5/6/2019
TID #: N/A	Project Title: LAUNCHCC3235MOD	
Number: MCU070	Rev: A	Sheet Title: LEDs_Switches_Sensors
SVN Rev: Not in version control	Assembly Variant: 001	Sheet: 4 of 6
Drawn By: Seong Kim	File: MCU070A_LEDs_Switches_Sensors.SchDoc	Size: B
Engineer: Seong Kim	Contact: http://www.ti.com/support	

BOOSTER PACK INTERFACE



For Antenna diversity



ADC DRIVER

